

## ROPE

MAGNETO-INDUCTIVE DEVICE FOR  
NDT OF WIRE ROPES



### DETECTOR:

Weight: 7 kg to 34 kg

Max n° ropes: 1

Rope diameter: up to 90 mm

### FEATURES:

Magnetic field source:

Permanent magnets (NdFeB)

Sensor Type: Coils

Measured signal: LF

### PERFORMANCE:

Max Speed: 8 m/s.

EN 12927/8 certified

### ACQUISITION SYSTEM IASH

Sampling rate per channel:

up to 12.5 kS/s

Resolution: 16 bit

Battery voltage: 12 Vdc

Indicative IASH battery autonomy  
in continuous operation: 24 hours.

Battery charging IASH:

230 Vac - 50 Hz.

Software: AMC\_R&L\_MONITOR

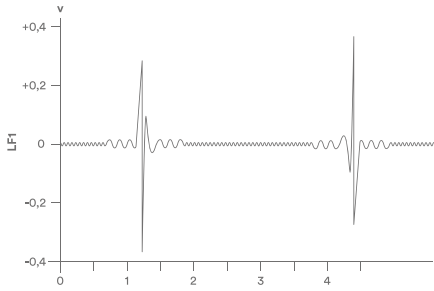
### OTHER FEATURES:

Operating temperature:

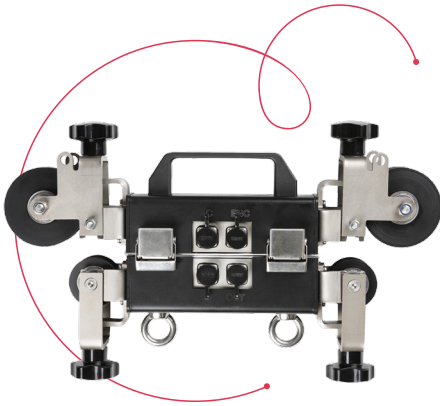
-20 °C + 50 °C

Transport accessories:

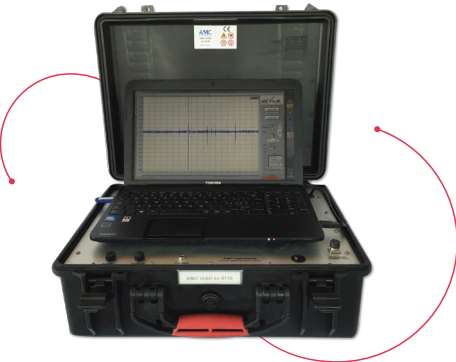
Professional cases.



LF signal



LIFTLC detector



IASH acquisition system

The ROPE device family consists in a wide range of detectors, suitable for the ropes inspections in the lifting and cableways sectors.

The system is based on the magneto-inductive principle, the device is suitable in different sizes, depending on the maximum rope diameter analyseable.

AMC ROPE allows a safe, quick and objective analysis of the rope integrity, by showing internal and external broken wires, wear and corrosion, according to the ISO 4309 standard.

The AMC ROPE family devices are certified according to the EN 12927-8 regulation.

The detector is connected to a digital acquisition unit (IASH) which allows the operator to produce a report through data storage and visualization.



Jacobus Lipsweg 100  
NL-3316 BP Dordrecht  
T: +31 (0)78 - 654 99 66  
E: [info@le-bv.nl](mailto:info@le-bv.nl)